

## SYSTEM TEMP MONITOR MANUAL

by d4f\_MAC

Q: I use this monitor, but is not look as yours?

A: sure, probably I have another mainboard as you.

Q: means that, my Speedfan sensors are different as yours?

A: correct, each mainboard vendor have different structure and another manufacturer of sensors. even same two of different mainboard from same vendor, but different version number can have different sensors.

Q: that means that Speedfan found sensors on my mainboard edifferent as on yours?

correct. that means that sensors are on different number of speedfan control panel.

Q: OK, means I must change for my mainboard the Speedfan sensor port number?

A: Yes, you must change the \*.ini file manually for your mainboard.

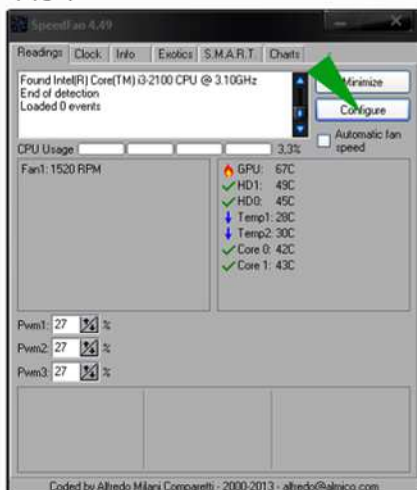
SORRY, but you can not await from me that I write script, for each mainboard, that is a job of 10 years. ;).  
mean I you want to use, you can change the \*.ini file manually, by this tutorial,  
or you just dont use this mod. your choice.

Greetz, MAC

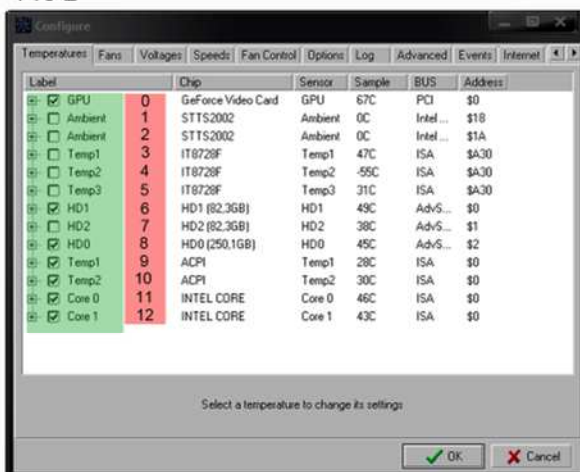
How to?

1. download a speedfan 4.49, install and start this great tool.
2. open it (see PIC 1). click on „configure“ than you see the PIC 2.  
(PIC 2 show you a number of sensors what the Speedfan found on your PC. (lightly green marken field)
3. Now you count the number of sensors starting from top (see red filed in PIC 2, in this case will be 12 sensors)

PIC 1

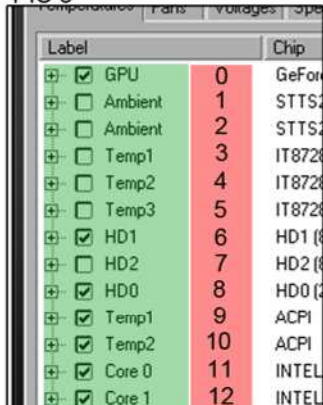


PIC 2



4. chose max of 9 sensors or less what you want to control, and unmark the rest. (see PIC 3)  
(in this example I mark 7 sensors, No.: 0,6,8,9,10,11,12)

PIC 3



5. Close Speedfan „configure“ windows and minimize Speedfan in taskbar.

6. Start you rainmeter, install and open my SYS TEMP MONITOR mod, chose one of 8 configurations. (each one is a combination of Animations. für anybody something.)
7. when you find your configuration, use editor/notepad to modify the \*.ini file.
8. Search section for sensor ports (see PIC 4)
9. this green arrow marked number are sensor number over the Rainmeter talk to Speedfan (see PIC5)

PIC 4

```

sys temp monitor-A123.ini - Editor
Datei Bearbeiten Format Ansicht
hidden=0
;-----
[Base]
Meter=Image
X=0
Y=0
ImageName=#SKINSPATH#\SYS_TEMP_MONITOR\Images\bg-dark2.png
;-----
;[MeasureSpeedTemp0]
Measure=Plugin
Plugin=Plugins\SpeedFanPlugin.dll
SpeedFanType=TEMPERATURE
SpeedFanNumber=0
MinValue=0
MaxValue=100
IfBelowValue=#CautionTemp#
IfBelowAction=[!SetOption MeterText0 FontColor #Normal#][!UpdateMeter *][!Redraw]
IfAboveValue=#CautionTemp#
IfAboveAction=[!SetOption MeterText0 FontColor #Caution#][!UpdateMeter *][!Redraw]
;[MeasureSpeedTemp1]
Measure=Plugin
Plugin=Plugins\SpeedFanPlugin.dll
SpeedFanType=TEMPERATURE
SpeedFanNumber=1
MinValue=0
MaxValue=100
IfBelowValue=#CautionTemp#
IfBelowAction=[!SetOption MeterText1 FontColor #Normal#][!UpdateMeter *][!Redraw]
IfAboveValue=#CautionTemp#
IfAboveAction=[!SetOption MeterText1 FontColor #Caution#][!UpdateMeter *][!Redraw]
;[MeasureSpeedTemp2]
Measure=Plugin
Plugin=Plugins\SpeedFanPlugin.dll
SpeedFanType=TEMPERATURE
SpeedFanNumber=2
MinValue=0
MaxValue=100
IfBelowValue=#CautionTemp#
IfBelowAction=[!SetOption MeterText2 FontColor #Normal#][!UpdateMeter *][!Redraw]
IfAboveValue=#CautionTemp#
IfAboveAction=[!SetOption MeterText2 FontColor #Caution#][!UpdateMeter *][!Redraw]
;[MeasureSpeedTemp3]
Measure=Plugin
Plugin=Plugins\SpeedFanPlugin.dll
SpeedFanType=TEMPERATURE
SpeedFanNumber=3
MinValue=0

```

PIC 5

```

[MeasureSpeedTemp0]
Measure=Plugin
Plugin=Plugins\SpeedFanPlugin.dll
SpeedFanType=TEMPERATURE
SpeedFanNumber=0
MinValue=0
MaxValue=100
IfBelowValue=#CautionTemp#
IfBelowAction=[!SetOption MeterText0 FontColor #Normal#][!UpdateMeter *][!Redraw]
IfAboveValue=#CautionTemp#
IfAboveAction=[!SetOption MeterText0 FontColor #Caution#][!UpdateMeter *][!Redraw]
;[MeasureSpeedTemp1]
Measure=Plugin
Plugin=Plugins\SpeedFanPlugin.dll
SpeedFanType=TEMPERATURE
SpeedFanNumber=1
MinValue=0
MaxValue=100
IfBelowValue=#CautionTemp#
IfBelowAction=[!SetOption MeterText1 FontColor #Normal#][!UpdateMeter *][!Redraw]
IfAboveValue=#CautionTemp#
IfAboveAction=[!SetOption MeterText1 FontColor #Caution#][!UpdateMeter *][!Redraw]
;[MeasureSpeedTemp2]
Measure=Plugin
Plugin=Plugins\SpeedFanPlugin.dll
SpeedFanType=TEMPERATURE
SpeedFanNumber=2
MinValue=0
MaxValue=100
IfBelowValue=#CautionTemp#
IfBelowAction=[!SetOption MeterText2 FontColor #Normal#][!UpdateMeter *][!Redraw]
IfAboveValue=#CautionTemp#
IfAboveAction=[!SetOption MeterText2 FontColor #Caution#][!UpdateMeter *][!Redraw]

```

10. Now you remmber how much and which of sensors you chose be Speedfan in „configure menu“
  - you must change the 4 green marked numbers in each section like your choice.
  - (my mod have already 9 sensors from 0-9 inside, more than 9 is possible but my backgroud grafpis ist maded for 9.)

INFO. this is a part one of job

INFO (THE SEMICOLON „;“, in my example, placed before each section means „dont use this section“, you must remove semicolon by this sensors who you want to use.

11. Now we chose the „vertikal bar section “ for your sensors. In \*.ini file search setion (see PIC 6)
12. again you change by each section the green marked numbers ( this time only two per section) (see PIC 7) whit your sensor numbers. the

INFO: the first bar from left is „ section with No. 0“ and each on right side is for 9 pixel moved to the right, make easy for your config.

PIC 6

```

sys temp monitor-A123.ini - Editor
Datei Bearbeiten Format Ansicht ?
updateCounter=1

; -----
; [MeterSpeedTemp0]
MeasureName=MeasureSpeedTemp0
Meter=Bar
X=130
Y=37
W=#width#
H=#height#
BarColor=81,107,243,150
BarOrientation=Vertical

; [MeterSpeedTemp1]
MeasureName=MeasureSpeedTemp1
Meter=Bar
X=139
Y=37
W=#width#
H=#height#
BarColor=5,173,244,150
BarOrientation=Vertical

; [MeterSpeedTemp2]
MeasureName=MeasureSpeedTemp2
Meter=Bar
X=148
Y=37
W=#width#
H=#height#
BarColor=5,173,244,150
BarOrientation=Vertical

; [MeterSpeedTemp3]
MeasureName=MeasureSpeedTemp3
Meter=Bar
X=157
Y=37
W=#width#
H=#height#
BarColor=184,189,100,150
BarOrientation=Vertical

; [MeterSpeedTemp4]
MeasureName=MeasureSpeedTemp4
Meter=Bar
X=166

```

PIC 7

```

sys temp monitor-A123.ini - Editor
Datei Bearbeiten Format Ansicht ?
updateCounter=1

; -----
; [MeterSpeedTemp0]
MeasureName=MeasureSpeedTemp0
Meter=Bar
X=130
Y=37
W=#width#
H=#height#
BarColor=81,107,243,150
BarOrientation=Vertical

; [MeterSpeedTemp1]
MeasureName=MeasureSpeedTemp1
Meter=Bar
X=139
Y=37
W=#width#
H=#height#
BarColor=5,173,244,150
BarOrientation=Vertical

; [MeterSpeedTemp2]
MeasureName=MeasureSpeedTemp2
Meter=Bar
X=148
Y=37
W=#width#
H=#height#
BarColor=5,173,244,150
BarOrientation=Vertical

```

INFO: the semicomon before section means also here same „dont use me“



13. Now we change the „textual info“ for each of sensors. In. \*.ini file search section with (see PIC 8).
14. now change the green marked number (PIC 9) with your sensor numbers.

INFO. The section with „ No. 0 “ is the first from left and another move to the right for 20 pixel. (max 9 fields)

PIC 8

```
sys temp monitor-A123.ini - Editor
Datei Bearbeiten Format Ansicht ?
BarOrientation=Vertical
;-----
[MeterText0]
Meter=STRING
X=77
Y=220
MeasureName=MeasureSpeedTemp0
Text="%1"
FontColor=#FontColor#
FontSize=#FontSize#
StringAlign=CENTER
NumofDecimals=0
FontFace=#FontFace#
AntiAlias=0
; [MeterText1]
Meter=STRING
X=96
Y=220
MeasureName=MeasureSpeedTemp1
Text="%1"
FontColor=#FontColor#
FontSize=#FontSize#
StringAlign=CENTER
NumofDecimals=0
FontFace=#FontFace#
AntiAlias=0
; [MeterText2]
Meter=STRING
X=115
Y=220
MeasureName=MeasureSpeedTemp2
Text="%1"
FontColor=#FontColor#
FontSize=#FontSize#
StringAlign=CENTER
NumofDecimals=0
FontFace=#FontFace#
AntiAlias=0
; [MeterText3]
Meter=STRING
X=135
Y=220
MeasureName=MeasureSpeedTemp3
Text="%1"
FontColor=#FontColor#
FontSize=#FontSize#
StringAlign=CENTER
NumofDecimals=0
```

PIC 9

```
sys temp monitor-A123.ini - Editor
Datei Bearbeiten Format Ansicht ?
BarOrientation=Vertical
;-----
[MeterText0]
Meter=STRING
X=77
Y=220
MeasureName=MeasureSpeedTemp0
Text="%1"
FontColor=#FontColor#
FontSize=#FontSize#
StringAlign=CENTER
NumofDecimals=0
FontFace=#FontFace#
AntiAlias=0
; [MeterText1]
Meter=STRING
X=96
Y=220
MeasureName=MeasureSpeedTemp1
Text="%1"
FontColor=#FontColor#
FontSize=#FontSize#
StringAlign=CENTER
NumofDecimals=0
FontFace=#FontFace#
AntiAlias=0
; [MeterText2]
Meter=STRING
X=115
Y=220
MeasureName=MeasureSpeedTemp2
Text="%1"
FontColor=#FontColor#
FontSize=#FontSize#
StringAlign=CENTER
NumofDecimals=0
FontFace=#FontFace#
AntiAlias=0
```

15. That whos, SAVE, and EXIT, restart the Rainmeter or use „reload“ on skin only.

REMEMBER! SOME SENSORS ARE ALSO ON DIFFERENT POSITION AS BY MY MOD, YOU SHELL MOVE TO THE RIGHT POSITION

Example here with only seven sensors (on my job computer, the sensor for HDD 0 is on place 8, and sensor for HDD 1 on place 5, but on my background graphic is the HDD 0 before HDD 1, when you look from left to the right. so mus remove to the right position. just try.)

